



South African Quilters' Guild  
presents

National Quilt Competition  
Categories

Please Remember...when

## **Choosing the category that best suits your quilt**

- Study the criteria in each category and also the SAQG Rules and Conditions for the Competition.
- All entries must be made predominantly from cloth, consisting of at least three (3) layers and be quilted through all layers or as specified.

### Note

- The selected images presented here are just a few examples of many possibilities
- Copyright exists on all the selected images

**The SAQG Competition Categories**  
consist of **Core** and **Optional** categories.

**Core Categories are no 1 – 9:**

These categories are compulsory - all and always part of the Competition.

**Optional Categories are no 10 – 16:**

Organizers can choose to include some of the Optional categories in addition to the Core categories in the Competition

## NOTE:

In all Categories, 1-16 the quilt entries must be made by one person

Except for Categories 8 and 9 and 15, the quilt entries can be made by more than one person

In the Wall Quilt categories 3, 4 and 5 there is a Standard and Masters section

# BED QUILTS – *made by one person*

## **1. Bed Quilts: Pieced and/ or Appliquéd**

Own design or using elements from public domain

## **2. Bed Quilts: Open**

Read the Criteria, Rules and Conditions for Open

All Standard, no Masters in Bed Quilts

WALL QUILTS – made by 1 person

### **3. Wall Quilts: Traditional Techniques**

Constructed using traditional techniques and materials

### **4. Wall Quilts: Art Pictorial**

### **5. Wall Quilts: Art Quilt/Fibre Art**

3, 4, 5 Standard and Masters

### **6. Wall Quilts: Open**

Read Criteria, Rules and Conditions for Open  
Standard only

### **7. Youth Quilts**

*Quilts made by more than 1 person*

## **8. Collaborative Quilts**

## **9. Group Quilts**

Read Criteria, Rules and Conditions for 8 and 9

## **Optional categories** -made by 1 person

### **10. Theme /Challenge**

### **11. Modern Quilts**

### **12. Miniature Quilts**

### **13. Wearable Art**

### **14. 3-Dimensional Items**

### **15. Community Project Quilts** made by one or more persons

### **16 . Conceptual Art Quilts**

In the criteria of categories the words “**Public Domain**” are used

### An Explanation of “**Public Domain**”

- These can be commonly used block designs that have been in use for generations. They can be used freely by anyone e.g. Dresden Plate, Rose of Sharon, Rising Star, etc.
- They can also be design elements like block patterns or motifs whose intellectual property rights have expired.
- NB: It is each entrant’s responsibility to respect copyright, where applicable.



**It is important that Quilters entering the Competition have read and adhere to all the Rules and Conditions**

All entrants who use a **sewing machine** to quilt their entries take note of Points 11, 12 and 13 of the Rules and Conditions which concern:

The type of sewing machine - stationary or movable quilting machine.

All forms of free-motion machine-quilted quilts.

Quilts where computer-digitized quilting and or embroidery patterns/designs have been used.

For all details download the Rules and Conditions

# BED QUILTS

## 1. Bed Quilts: Pieced and/or Appliquéd:

- Own design or design derived from using elements from the public domain
- No side shorter than 130cm and no side longer than 240cm.
- Pieced quilts, with or without appliqué, that are constructed using traditional techniques and materials.
- Appliquéd quilts, with or without piecing, that are constructed using traditional techniques and materials.
- The quilt must be your own design or a design derived from using elements from the public domain.

- NOTE: The quilt cannot be a copy of another quilt or artwork nor made from a commercial quilt pattern.
- Whole-cloth bed quilts, not made using computer-digitized quilt patterns and/or computer digitized embroidery patterns, should be entered in this category.

Standard

NO separate Masters in this category/ Anyone can enter.

**BOP**



Appliquéd and  
Pieced Bed Quilt  
*"Stars and Flowers"*  
by Moira Ryder



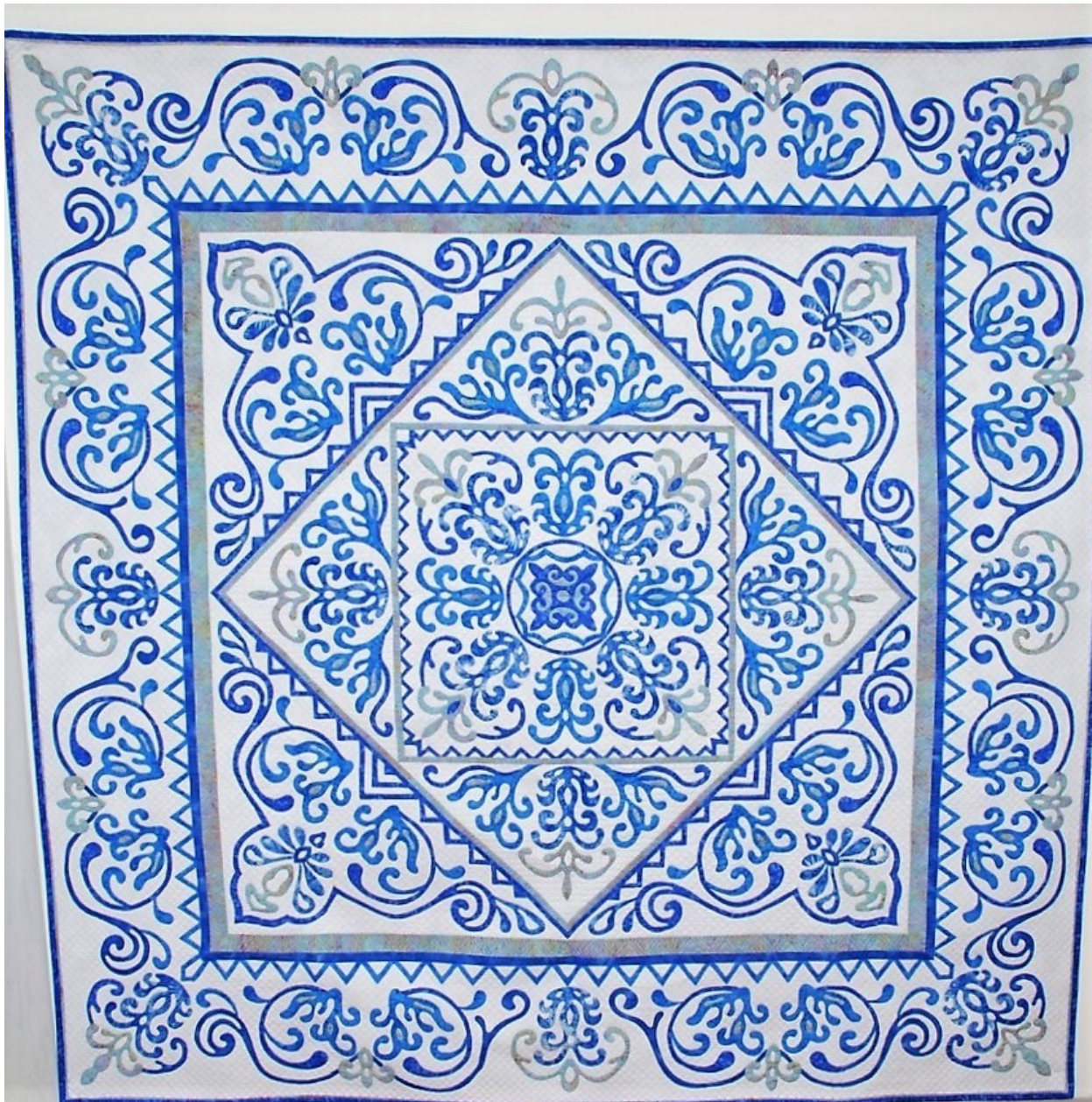


Pieced Bed Quilt  
*"Lone Star"* by  
Janet Waring



Pieced and  
Appliquéd Bed  
Quilt  
*"Jewelled  
Garden"*  
by Alet Davy





Royal Doulton, Delft  
or Wedgewood  
by Marline Turner

## 2. **Bed Quilts: Open** (2 slides)

- No side shorter than 130cm and no side longer than 240cm.
- Pieced quilts, with or without appliqué, that are constructed using traditional techniques and materials.
- Appliquéd quilts, with or without piecing, that are constructed using traditional techniques and materials.
- This category is for quilts that meet the stipulated requirements below:



Quilts constructed and quilted by **an individual** AND

- made using a published/commercial pattern or
- made using computer-digitized quilting or
- made using machine embroidery patterns or
- have been started in a class or
- be a replica of an antique quilt (made approximately before 1960) or
- made by using non-quilted traditional techniques such as Cathedral Window, Mola and Yo-yo's.
- No kits are allowed.

**Important:** comply with point 16 about Credits in Rules and Conditions.

Standard

NO separate masters in this category / Anyone can enter.

**BPR**

## **SAQG Rules and Conditions** take note of point 16

**16. Credits:** Note that when the stated design source is not exclusively your own - this includes using someone else's pattern, artwork, photography, or even another quilt as inspiration, even if the design has been altered - then comprehensive design credits must be given.

- It is the entrant's responsibility to obtain all necessary copyright releases for work that is covered under copyright laws.

## Rules and conditions (cont)

- Proof, as far as possible, such as correspondence, a letter of permission, and or approved confirmation, and an A4 photo or colour photocopy of the design source must be supplied.
- A printed copy of the completed Entry Form, together with the credits, design source, inspiration, photocopies and or permissions etc. must be placed in a clear plastic sleeve pinned to the back of the quilt.

# WALL QUILTS

## 3. Wall Quilts: Traditional techniques

Constructed by using traditional techniques and materials

- No side shorter than 30cm or longer than 200cm.
- Pieced quilts, with or without appliqué, that are constructed using traditional techniques and materials.
- The quilt must be your own design or a design derived from using elements from the public domain.
- NOTE: It cannot be a copy of another quilt/art work or made from a commercial quilt pattern.

3.1 Standard **WQS**

3.2 Masters **WQM**



Wall Quilt  
*"African Baskets"*  
by Colleen Butler



Wall Quilt  
*"Fran Club"*  
 by Allison Gans





Wall Quilt  
*"Summertime"*  
by Alet Davy



Example of a  
"traditional" Wall  
Quilt  
*"Diamond Fever"*  
by Ina Meyer





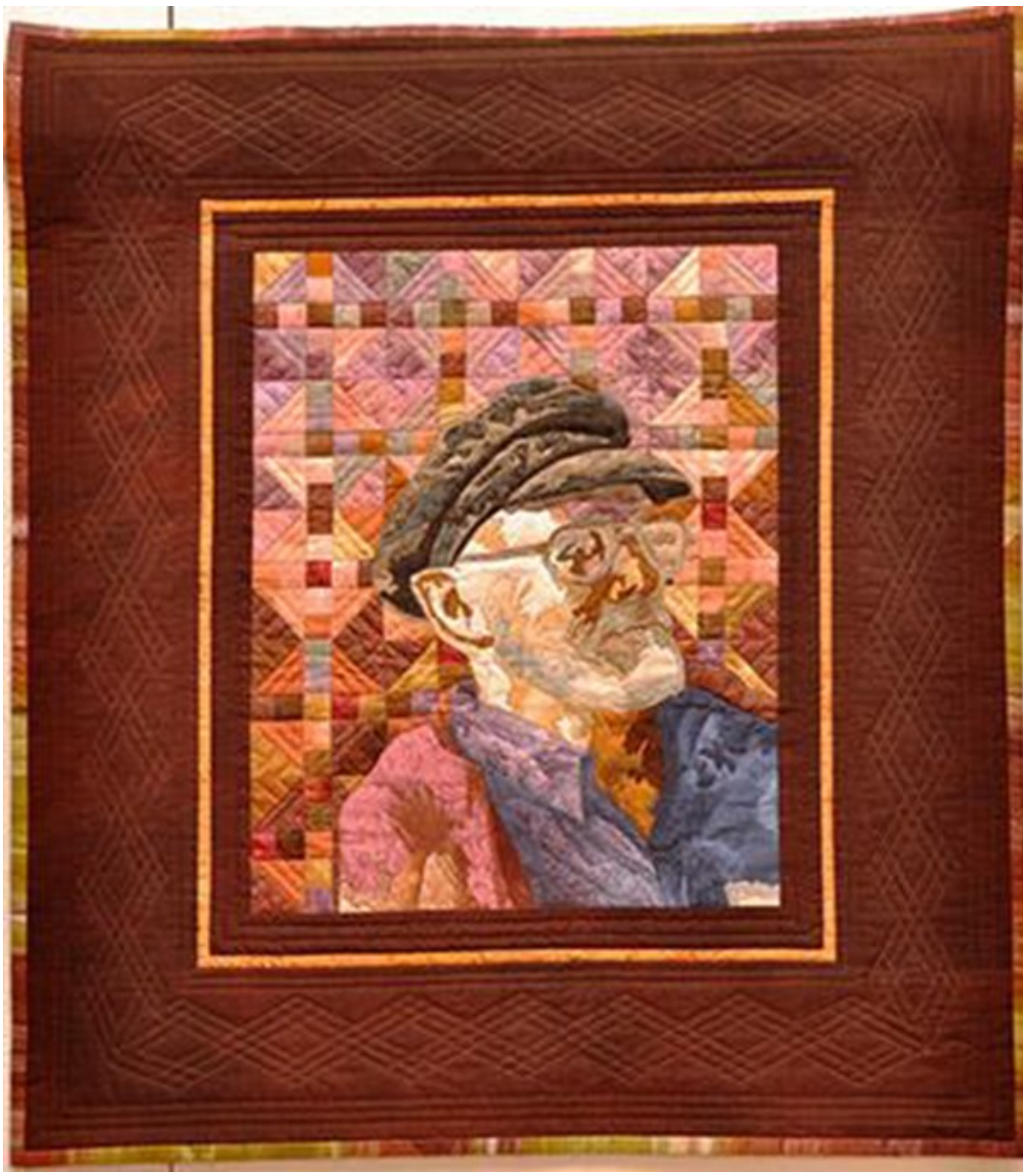
a traditional Wall Quilt  
*"Flowers Galore"*  
by Helen Izikowitz

## 4. Wall Quilts – Art Pictorial

- No side shorter than 30cm and no side longer than 200cm.
- Any technique or combination of techniques can be used.
- Quilts that are a depiction/ representation of persons, places and/or things.  
The representation can be realistic or stylised.
- The quilt must be your own design.

4.1 Standard **WPS**

4.2 Masters **WPM**



Art Pictorial Wall Quilt  
"Oupa"  
by Mari Strydom





Art Pictorial Wall Quilt  
*"Beasts of Burden"*  
by Joan Barnes





Art Pictorial Wall  
Quilt  
*"Tree Spirit"* by Sue  
Cameron

# Notes on Whole-Cloth Wall Quilts

With whole-cloth quilts, the nature of the quilted or painted design is the decisive factor.

- For example, when the design is your own design and predominantly a rather traditional, repetitive with geometric/organic shape, then enter in category 3. Wall Quilts: and choose Standard or Masters
- If it is not your own design, and or with any of the stipulated points in the Open category, then enter in category 6. Wall Quilts – Open



a Whole-cloth Wall Quilt  
*"Some Kind of Wonderful"*  
by Telene Jeffrey





a Whole-cloth quilt  
*"Hide and Seek"*  
by Claire Wallace



## 5. Wall Quilts – Art Quilt / Fibre Art

- No side shorter than 30cm and no side longer than 200cm.
- Any technique or combination of techniques can be used.
- Quilts that are made primarily of fibre/cloth, are abstract and/or conceptual in nature and do not depict specific persons, places and/or things in a pictorial and or realistic style.
- Any other materials/media can be included.
- Some quilting/stitching through three layers must be included.
- The quilt must be your own design.

5.1 Standard **WAS**

5.2 Masters **WAM**

# Notes on Fibre Art Quilts

- It seeks to break away from traditional representation of physical objects
- It explores the relationships of forms and colours
- It can be *non figurative abstract art* – which uses a visual language of shape, form, colour and line to create a composition and/or
- *figurative abstract art* – compositions derived from a recognizable image, but are so distorted/abstracted that the image might not even be visible anymore



an Art/ Fibre Art  
Wall Quilt  
*"Pebble Beach"*  
by Jenny Hearn



an Art Wall Quilt  
*"Global Warming"*  
by Margaret Landmann



a Fibre Art Wall Quilt  
*"Transformation"*  
by Marilyn Pretorius



An Art Wall Quilt  
*"Fragile"*  
Susan Wessels

# WALL QUILTS

## **Master Quilters:**

Note that in Wall Quilt categories 3, 4 and 5, if you are a Master Quilter i.e. having won a First prize or Best on Show in the Bed Quilt and/or Wall Quilt category/s at the previous SA National Competitions, you must enter your quilt in the Master section of the category/s.

In Wall Quilt categories 3, 4 and 5 there are two sections - Standard and Masters

In category no 6. Wall Quilt Open – only Standard.

## 6. Wall Quilts – Open

- No side shorter than 30cm and no side longer than 200cm
- Any technique or combination of techniques can be used.

The Open category is for quilts that meet the requirements below:

Quilts constructed and quilted by **an individual** AND

- made using a published/commercial pattern or
- made using computer-digitized quilting or
- made using machine embroidery patterns or



- have been started in a class or
- be a replica of an antique quilt (made approx. before 1960) or
- made by using non-quilted traditional techniques such as Cathedral Window and Mola and Yo-yo's.
- No kits are allowed.

Standard, No Masters /Anyone can enter

## **WPR**

Important: comply with point 16 about Credits in SAQG  
Rules & Conditions.

## **SAQG Rules and Conditions** take note of point 16

### **16. Credits:**

Note that when the stated design source is not exclusively your own - this includes using someone else's pattern, artwork, photography, or even another quilt as inspiration, even if the design has been altered - then comprehensive design credits must be given.

- It is the entrant's responsibility to obtain all necessary copyright releases for work that is covered under copyright laws.

## Rules and Conditions (Cont)

- Proof, as far as possible, such as correspondence, a letter of permission, and or approved confirmation, and an A4 photo or colour photocopy of the design source must be supplied.
- A printed copy of the completed Entry Form, together with the credits, design source, inspiration, photocopies and or permissions etc. must be placed in a clear plastic sleeve pinned to the back of the quilt.

## 7. Youth Quilts

**Age: up to 18 years** (Age as on 1<sup>st</sup> January in the year of competition)

- No side shorter than 30cm and no side longer than 150cm
- Any technique or combination of techniques can be used.
- All work done on the quilt must be entirely the entrant's own work.
- Quilt can be your own design, or (next slide)

- A design using elements from the public domain or a published/commercial pattern.  
Design credits must be given and an A4 colour photocopy must be included with the quilt entry.
- No kits are allowed.
- The name and details of the mentor, if any, must be stated on the entry form.

**YQJ**



# *Quilts made by more than one person*

## **8. Collaborative Quilts**

- No side shorter than 30cm and no side longer than 240cm.
- Any technique or combination of techniques can be used.
- A quilt that is made and constructed by **two (2) to four (4)** individuals, i.e. having been designed, pieced, appliquéd, embellished and or finished by the individuals involved.
- The quilt must be your own design or a design derived from using elements from the public domain.
- The quilt cannot be a copy of another quilt/artwork or made from a commercial quilt pattern.

**Important:** comply with points 9 and 10 of Rules & Conditions

**COL**

## 9. Group Quilts

- No side shorter than 30cm and no side longer than 240cm.
- Any technique or combination of techniques can be used.
- Quilts made by **five (5) or more** actively involved people belonging to the same Guild.
- Group quilts must be a design of one or more of the group members, or a design derived from using elements from the public domain.
- The quilt cannot be a copy of another quilt/artwork.

**Important:** comply with points 9 and 10 of Rules & Conditions.

**GRQ**

# SAQG Rules and Conditions — points 9 and 10

## **9. Maximum number of quilt entries:**

A maximum of **four (4)** entries per person is allowed, i.e. a participating quilter can enter no more than four (4) quilts into the competition.

- Whether you enter as an individual or as a paid/non-paid participant of a Collaborative / Group / or Community category, the rule of a maximum of four (4) entries also applies to these persons.

**10. Paid participants:** An entrant can pay someone else for having done work on their entry but may only enter the quilt in the Collaborative or Group categories. The name and details of the paid entrant/quilter must also be stated on the Entry Form as one of the entrants.

# Optional Categories

These are not part of the Core Categories. Organizers can choose one or more additional categories from the Optional Categories to include in the Competition.

## 10. Theme

- The Theme and or Challenge:  
Criteria are set and stipulated by organizers of the competition.

**THE**

# 11. Modern Quilts

- No side shorter than 30cm and no side longer than 240cm.
- Any technique or combination of techniques can be used.
- The quilt must be your own design or a design derived from using elements from the public domain.
- The quilt cannot be a copy of another quilt/artwork or made from a commercial quilt pattern.
- The general accepted features/attributes of a Modern quilt should be evident.

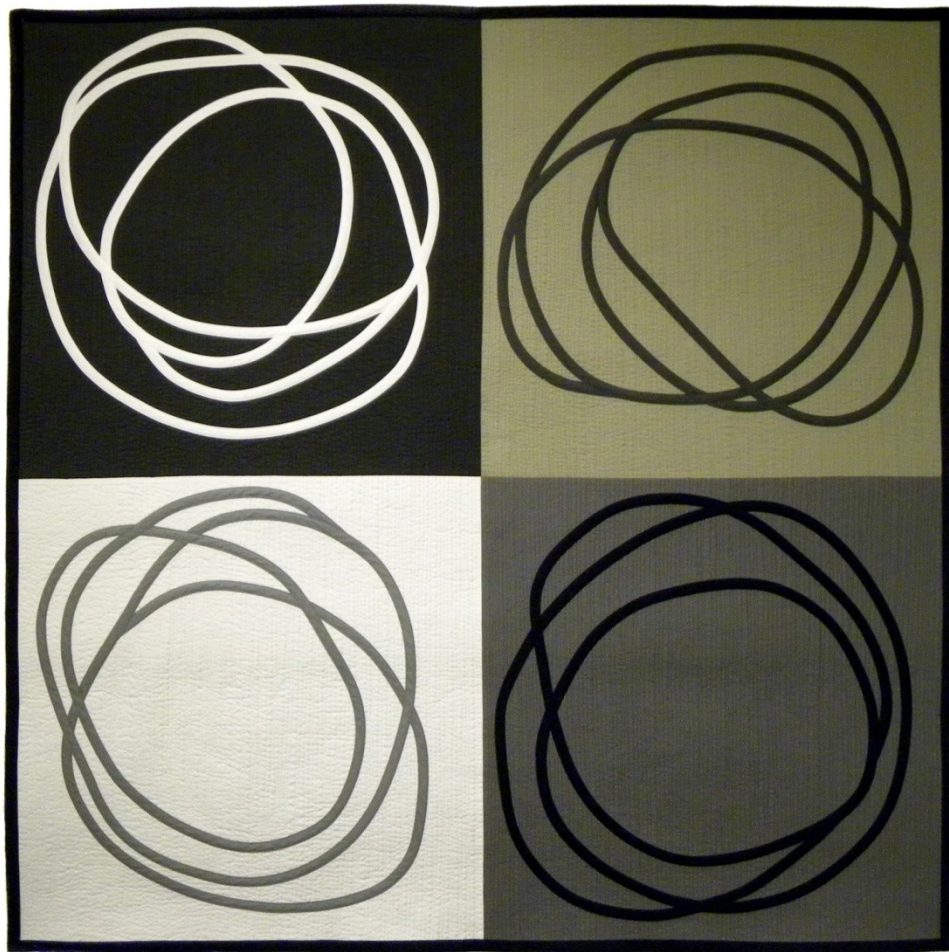
**MOD**



**Modern Quilts** category includes quilts that have a clean, graphic aesthetic with a strong visual impact. They can be machine or hand quilted in a way that is sympathetic to the design.

They can include any of the following attributes:

- Minimalism – less is more
- Negative space – often where quilting forms part of the design
- Improvisational piecing
  - Reinterpretation of traditional blocks
  - Asymmetry
  - Lack of visible block structure
  - Mostly solid fabrics
  - Bold colours, high contrast



Example of Modern  
Quilt  
“Rats Nest” by Diana  
Vandejar



“Log Cabin Quilter  
Unknown”  
by Diana Vandejar





Modern Quilt “  
Circles and Sails” by  
Colleen Butler

# “Container City” by Colleen Butler





## 12. Miniature Quilts

- **Important** – Entry must be a miniature quilt, in, wherein the size and proportions are small and/or the quilt is a scaled-down version of a regular-sized quilt. In a photo of the finished piece (with no indication of scale) the miniature should look like a full-size quilt.
- No side longer than 60cm or with a block/unit side no longer than 10cm.
- Use any technique or combination of techniques. including non-quilted methods such as Yo-yo, Cathedral Window and Mola.

## Miniature Quilts – (cont)

- May be sewn by hand, machine or any combination.
- The quilt must be your own design or a design derived from using elements from the public domain.
- The quilt cannot be a copy of another quilt/artwork or made from a commercial quilt pattern.
- All miniatures must have a 5cm deep sleeve sewn to the top back of the quilt, 1cm short of either side.

**MIN**



Miniature Quilt  
“Carousel”  
by Hazelmay Duncan



Miniature Baltimore  
"Ellie's visit"  
by Marline Turner





‘Jewel of India’  
by Marline Turner





Miniature quilt  
“Follow the Way”  
by Shan Fox

## **13. Wearable Art**

- All garments and/or apparel should be wearable.
- Item/s must include some areas, (at least 50%) that are quilted through three (3) layers.

**WEA**

## 14. 3-Dimensional items

- The entry/s must be 3-dimensional
- If not all, at least 50% must be quilted through three (3) layers.
- For display purposes the item can be hung from a hook, draped over a hanger or be free-standing and self-supporting.
- A maximum dimension can be set by the Competition Organizers, depending on their available exhibition space.

**3DI**

## 15. Community Project Quilts

- No side longer than 240cm
- Quilts made by individuals or by a group in Outreach or Community projects.

### CPQ

Important: comply with points 9 of Rules & Conditions.

#### 9. Maximum number of quilt entries:

A maximum of **four (4)** entries per person is allowed, i.e. a participating quilter can enter no more than four (4) quilts into the competition.

- Whether you enter as an individual or as a paid/non-paid participant of a Collaborative / Group / or Community category, the rule of a maximum of four (4) entries also applies to these persons.

## 16. Conceptual Art Quilts

- No side longer than 200cm
- Any technique or combination of techniques can be used.
- Quilts in which the most important aspect of the work is the concept/s or idea/s and this takes precedence over traditional and well-established aesthetic and technical concerns.  
The originality and thought-provoking manner in which the medium is used and the concept/s or idea/s is presented to make a visual statement are significant factors.
- The Artist's statement must accompany the Conceptual Art Quilt entry.

**CAQ**

# South African Quilters' Guild

Celebrating Quilting since 1989



The SAQG National Quilt Competition Categories and Rules and Conditions are available to download on the **SAQG** website: [www.quiltsouthafrica.co.za](http://www.quiltsouthafrica.co.za)